

ABOUT US

Arkform challenges traditional building costs by enabling you to build concrete structures for less.

Our mission is to reduce building costs in New Zealand.

ICFs are finished with cladding of your choice. There are many options

PRICE BUSTER

Using Arkform ICF reduces your concrete structure cost by at least \$80/m²

CONTACT US

ITM rep

SPEED SPEED SPEED

Is your project held-up finding good block layers?
Wait no longer.

With a “minor variation” to your plans Arkform ICF can be used as a replacement.

Installation is roughly twice as FAST as using concrete block.

No cranes!

Insulated Concrete Formworks are lightweight but very strong polystyrene blocks which are placed in the form of the concrete structure you wish to build. They are then filled with steel and then concrete. They are light they are easy to lift and place. The formwork remains in place after the pour to become insulation.

Block sizes are standard 1200mm lengths. We also provide corner blocks and T-sections.

Designs are available on our website
www.arkform.co.nz

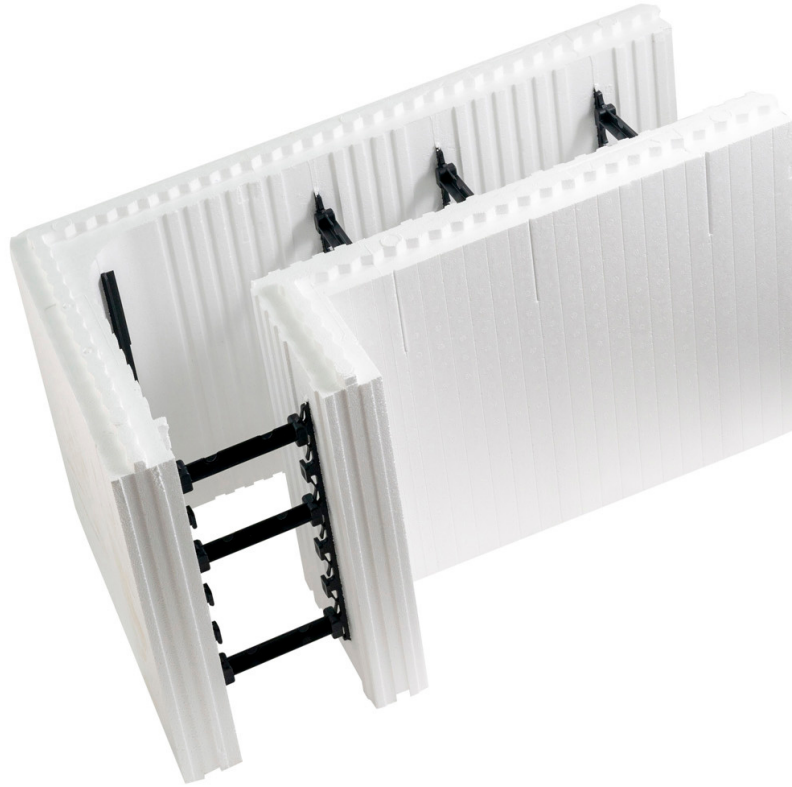


available at





**ICF
FORMWORK
FILLS WITH
CONCRETE
AND REMAINS
IN PLACE AS
INSULATION**



**NO MORE
BLOCKS**



FOUNDATIONS

Foundation edges are insulated with our ICF. ARKFORM will custom cut the rebates to the design of your build.

Buildings lose a significant portion of their energy through uninsulated slabs.

Insulating your foundation not only makes your building more efficient, but it also complies with the New Zealand Building Code regulations.

Edges and surfaces are finished off with epoxy resin plasters.



Foundations	Easy to use
Basements	Stronger than block
Retaining walls	Twice as fast

